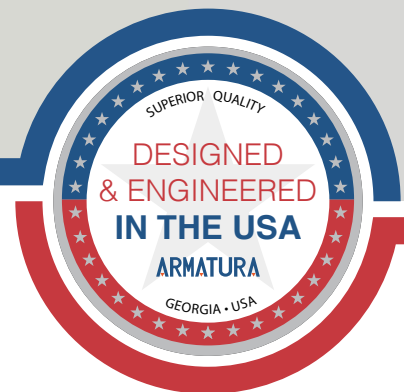


ARMATURA



MADE IN  
THAILAND



ARMATURA CONNECT

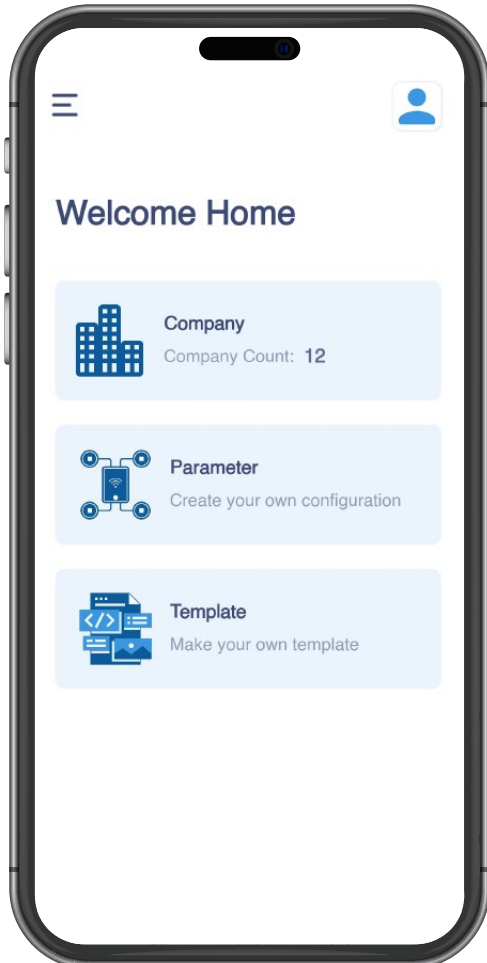
Smartphone-Based  
Parameter Configuration Solutions





## What is “Smartphone-Based Parameter Configuration Solutions”

Smartphone-Based Parameter Configuration Solutions empower administrators and installers to utilize their smartphones for convenient, on-the-spot adjustments. When in close proximity to access control terminals or controllers, these smart devices connect via Bluetooth, facilitating real-time parameter changes, settings customization, and firmware upgrades. This wireless access streamlines maintenance and ensures systems remain up-to-date with the latest features and security enhancements. By seamlessly integrating smartphones, these solutions enhance efficiency, responsiveness, and adaptability within access control, simplifying the configuration process and enabling immediate responses to evolving requirements.



### Company

A section for viewing the authorized account, company, or unit for management.



### Parameter

Enhance convenience for technical staff by allowing them to modify parameters, access controls, and product security settings.

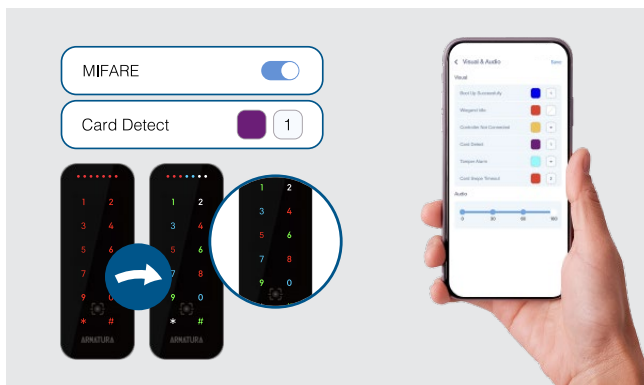


### Template

Allow technical staff to quickly fill in the product settings. They can simply enter the suggested value for each parameter and click a button to automatically populate the parameter in the new products.

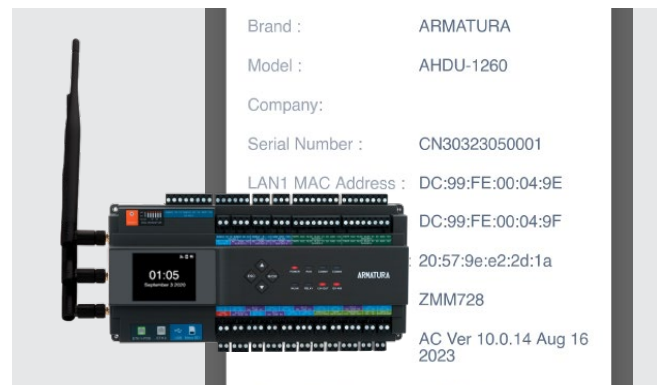


## Advantages of the “Smartphone-Based Parameter Configuration Solutions”



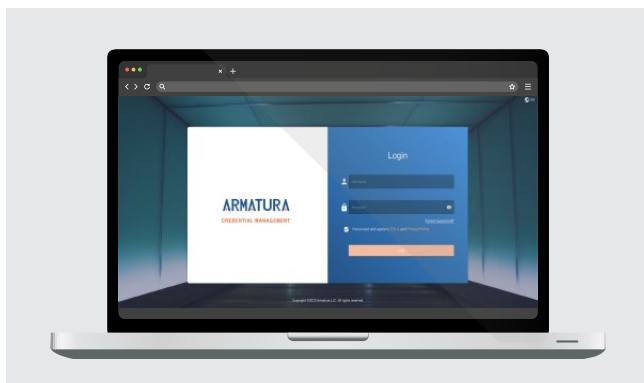
### • Flexibility and Customization

Armatura Connect enables users to modify settings and configurations wirelessly, providing flexibility in adapting to different access control requirements. It offers the ability to change operating frequencies, card formats, LED colors, and audio signal timing, allowing for a tailored user experience.



### • Convenient Information Retrieval

Armatura Connect allows users to easily access detailed information about connected products within the system. This feature facilitates informed decision-making, efficient troubleshooting, and streamlined maintenance processes.



### • Centralized Management

With Armatura Connect, administrators can conveniently manage access control settings and permissions through the Armatura ACMS. This centralized management system simplifies the administration process, ensuring efficient control and coordination.



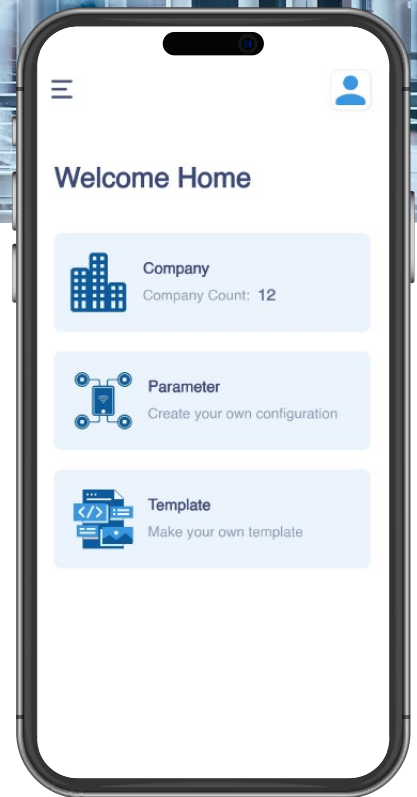
### • Integration and Compatibility

Armatura Connect is designed to work seamlessly with Armatura readers and controllers. Its compatibility with various card formats and integration capabilities with other security systems make it a versatile solution for access control needs.



## How does “Smartphone-Based Parameter Configuration Solutions” work?

The process starts by authorizing technical staff to grant permissions using Armatura ACMS. An activation code is generated by Armatura ACMS, which the technical staff can use to sign in to the Armatura Connect App. Once the app is active and a Bluetooth connection is established, the installer can easily modify parameters, access controls, and security settings by tapping designated buttons on their mobile device. After the technical staff completes the settings, the Company Admin can remove their permission to ensure security, preventing further access. This ensures a secure environment for the system.



### Step 1



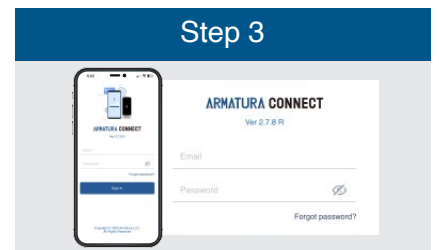
Enter the technical email address in the ACMS system and send an activation link, while granting specific company permissions to the technical staff.

### Step 2



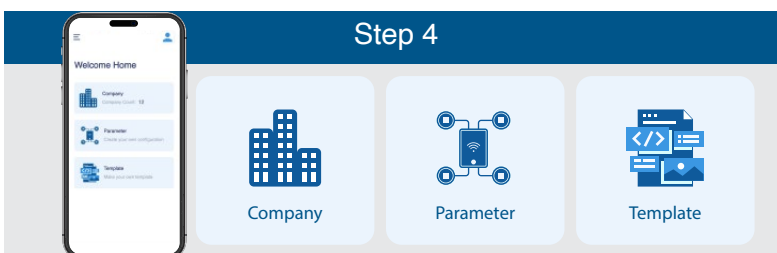
The technical staff receives an account activation link and enters a password.

### Step 3



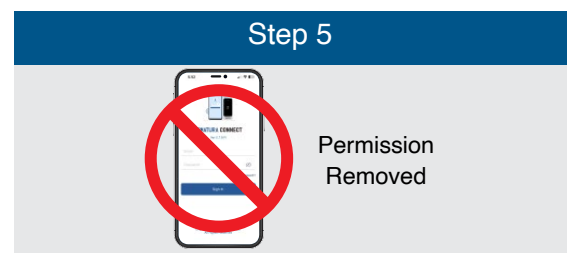
The technical staff logs in using the email and password.

### Step 4



With the app active and a Bluetooth connection established, the technical staff can effortlessly modify parameters, access controls, and security settings by simply tapping the designated buttons on their mobile device.

### Step 5



After the technical staff finishes the settings, the Company Admin can then remove the technical staff's permission, ensuring that the technical staff are not allowed access and maintaining security.





Company

## Armatura Connect's Company Unit Overview

Armatura Connect enables users to view authorized accounts or companies that have permission to modify the parameters of the access control system. It displays the company name, validity, and the number of devices associated with each company unit. This is especially useful for managing multiple locations.



### Company A

Company code: 100050

Device Count: 150

Validity: 2023-09-20 - 2025-12-07

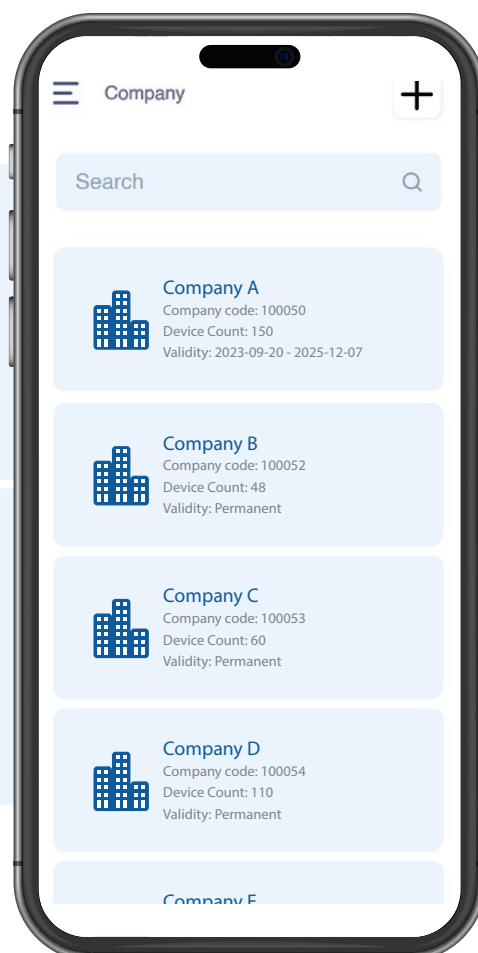


### Company B

Company code: 100052

Device Count: 48

Validity: Permanent



Company



Search



#### Company A

Company code: 100050

Device Count: 150

Validity: 2023-09-20 - 2025-12-07



#### Company B

Company code: 100052

Device Count: 48

Validity: Permanent



#### Company C

Company code: 100053

Device Count: 60

Validity: Permanent



#### Company D

Company code: 100054

Device Count: 110

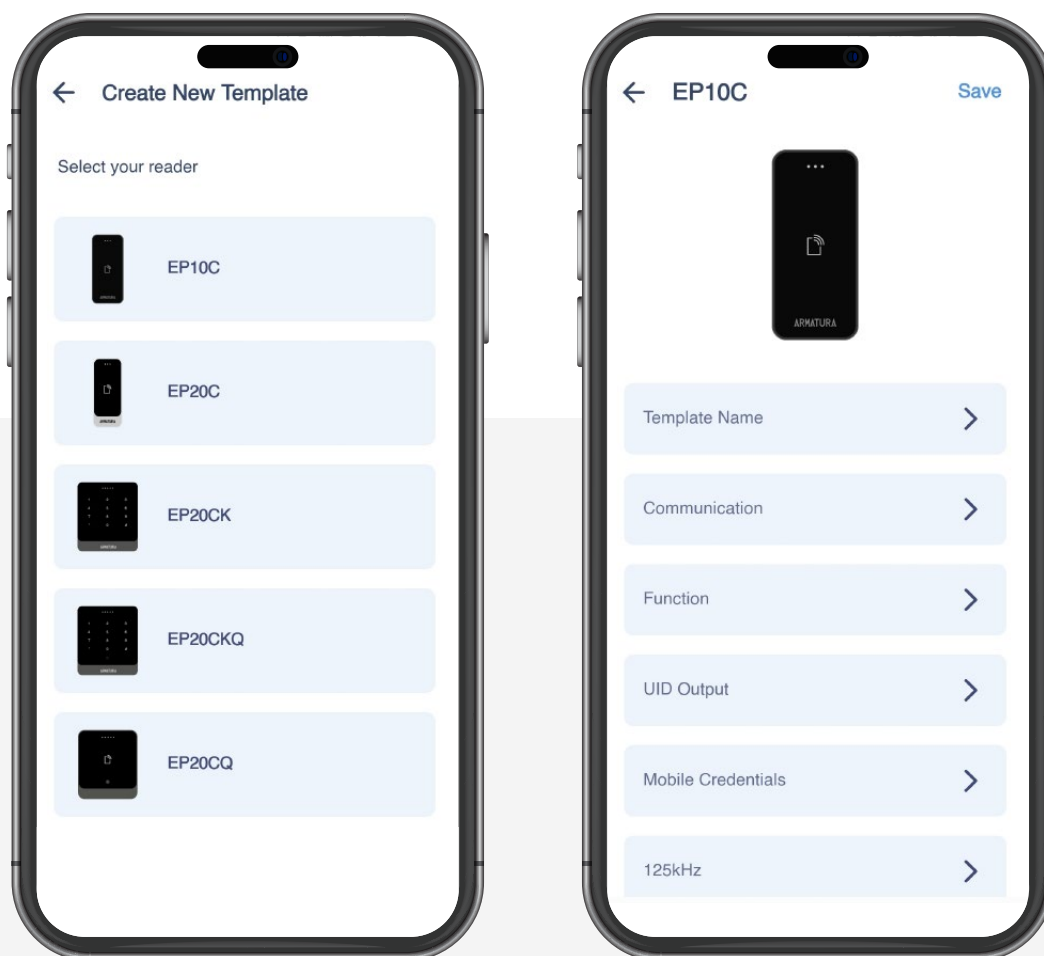
Validity: Permanent

Company E



## Simplified Configuration: Effortless Product Settings and Parameter Input

Enable the technical staff to complete the product settings by entering the suggested value for each parameter and effortlessly populating the parameters in the new products with a single button click. This feature makes it easy for administrators to configure settings and parameters without the need for specialized training or equipment.

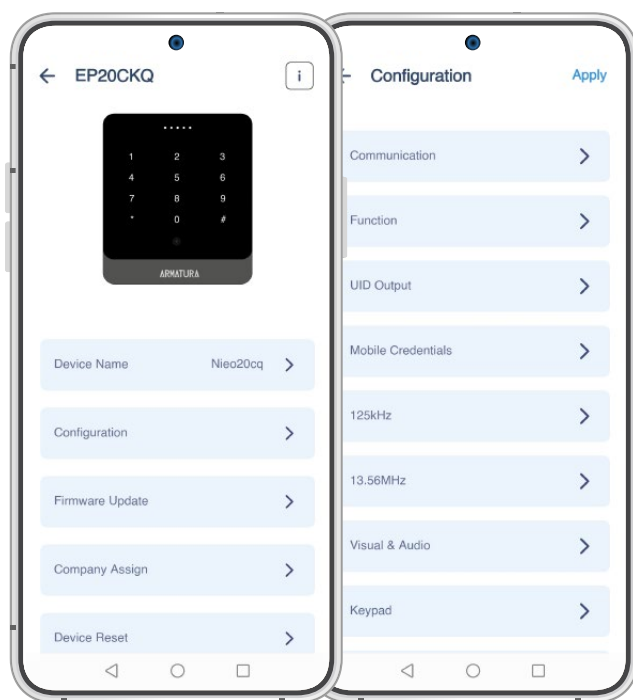




Parameter

## Product parameter configuration

With the Armatura Connect app, the technical staff can effortlessly choose the desired configuration options, such as "Communications & Panel Connection," "UID Output," "Mobile Credentials," "Operating Frequency," and "Keypad Light and Sound," with just a single click. This convenient feature enables wireless configuration amendments, eliminating the need for the traditional method of physically plugging in the LAN to modify the settings.



Offline Update

## Wireless Updates and Enhanced Security

When a firmware update for the system becomes available, company officers or technical staff can utilize Armatura Connect to wirelessly update the system using their smartphones. This ensures that the access control system stays current with the latest features and security enhancements, guaranteeing up-to-date functionality and protection.

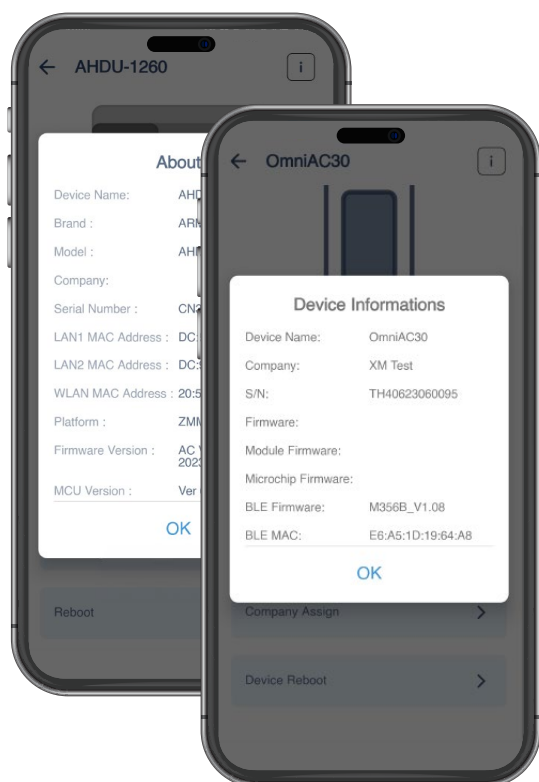
Firmware Upgrade





## Product Information Retrieval

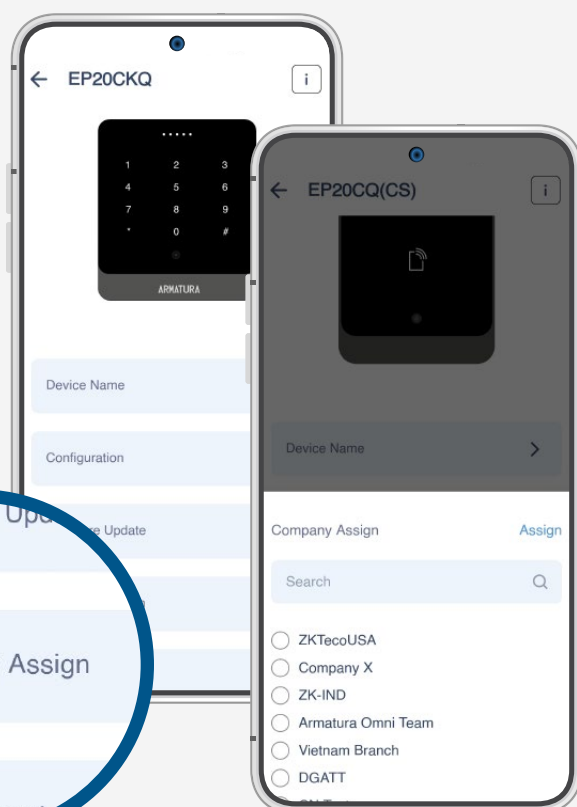
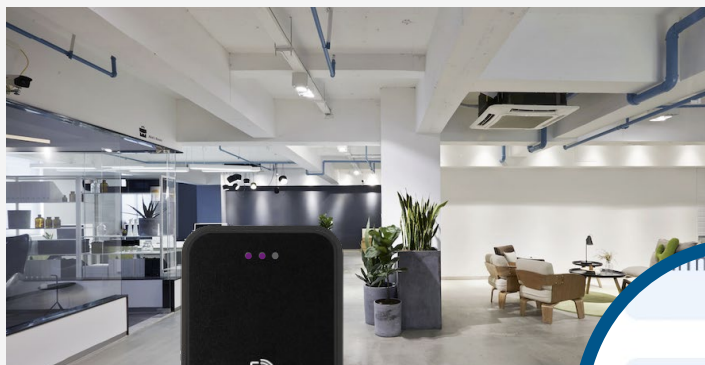
Armatura Connect provides the functionality to check product information. With this feature, users can easily access detailed information about the connected products within the system. By utilizing the app, company officers or technical staff can conveniently retrieve essential product details, such as the device name, serial number (S/N), firmware version, MAC address, and more.



Device  
Information

## Assign the product to a specific account for enhanced security

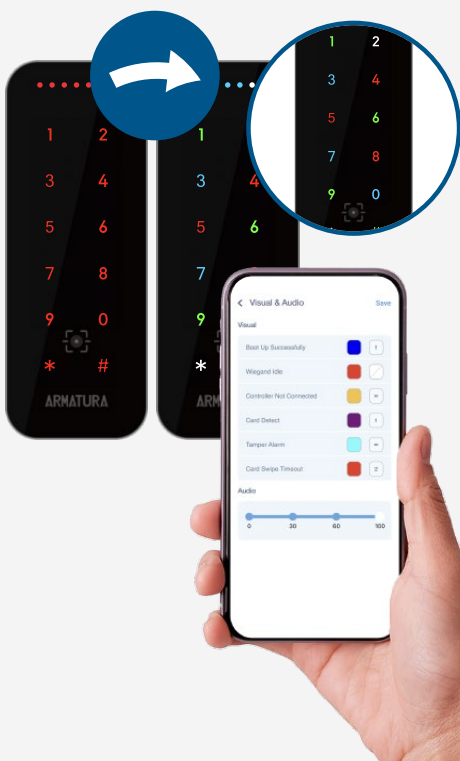
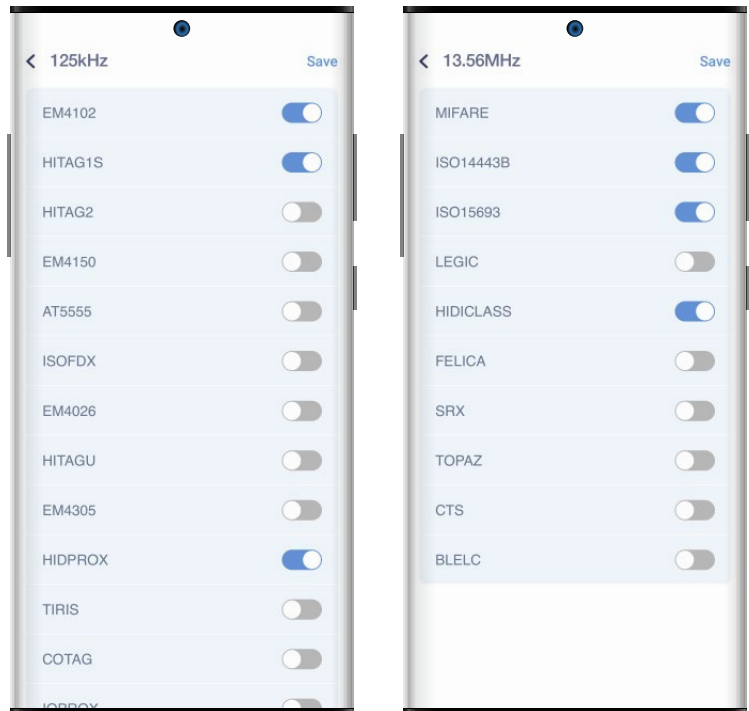
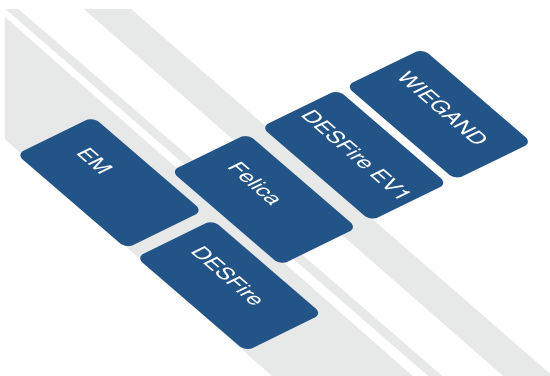
These features are primarily designed to ensure maximum security for the company. They allow specific access controls to be linked to specific user accounts. Once a reader or controller is connected to an account, other "Armatura Connect" users are not permitted to log into the system.



Company Assign

## Access Control Configuration and Card Format Adaptability

Users have the ability to wirelessly modify the operating frequency and standards of the access control system using their smartphones. This feature allows for seamless switching between various card formats, including LEGIC Advant, MIFARE, FeliCa, HID iCLASS, and more.



## Enhanced Visual and Audio Control: Customizable Reader Signals

Certain Armatura readers are equipped with LED lights that display specific signals to the users, such as Boot Up, Wiegand Idle, Controller Not Connected, Card Detect, and more. With Armatura Connect, technical staff can easily change the LED color with just a single click. This feature provides convenient control over the visual indicators of the readers, allowing for customization and improved user experience.

Moreover, Armatura also provides the capability to adjust the audio signal timing.

## Card Mode, Remote Mode and QR Code Mode Range Adjustment

Users have the ability to control the activation or deactivation of these mobile credential modes using the Armatura Connect app. Users can easily toggle the availability of "Card mode," "Express mode," and "Remote mode" based on their specific needs and preferences. This convenient feature gives users full control over the mobile credential functionality, allowing them to customize the access control system to align with their desired operational settings.



### CARD MODE

Place your smartphone over the reader like any physical access card.



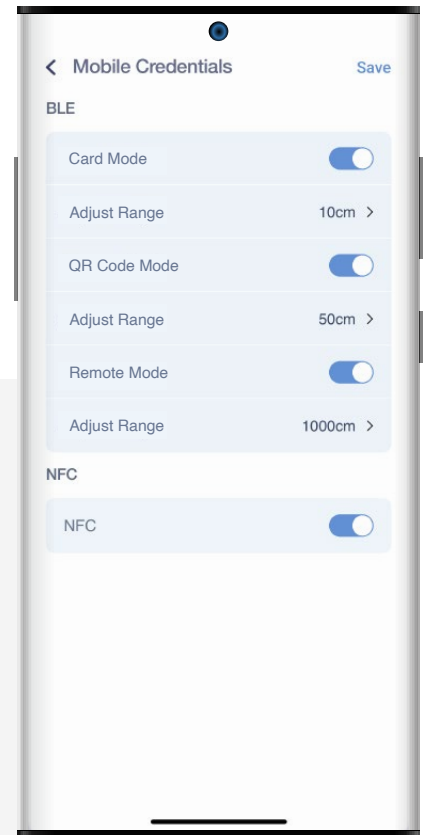
### REMOTE MODE

Open doors remotely by tapping a virtual button in the mobile app.



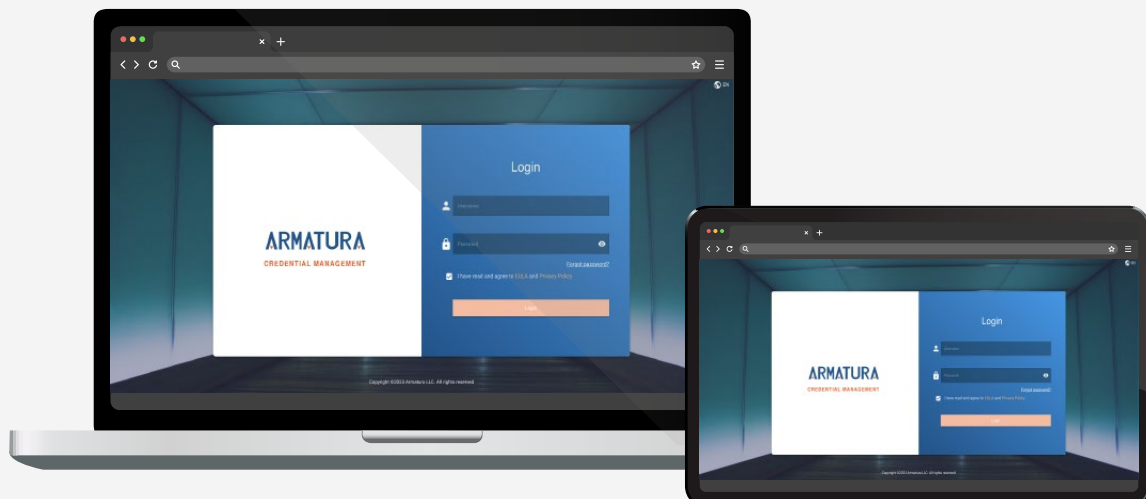
### QR CODE MODE

Present your QR Code and get access



## Armatura ACMS Back-end system

Armatura Connect operates under the Armatura ACMS, which enables administrators to log in and grant authorization to different technical staff members to access Armatura Connect. Once the technical staff completes their tasks and settings, the company admin has the capability to revoke their permissions, ensuring that the technical staff no longer have access. This strict control mechanism guarantees security, prevents unauthorized access, and maintains the integrity of the system.

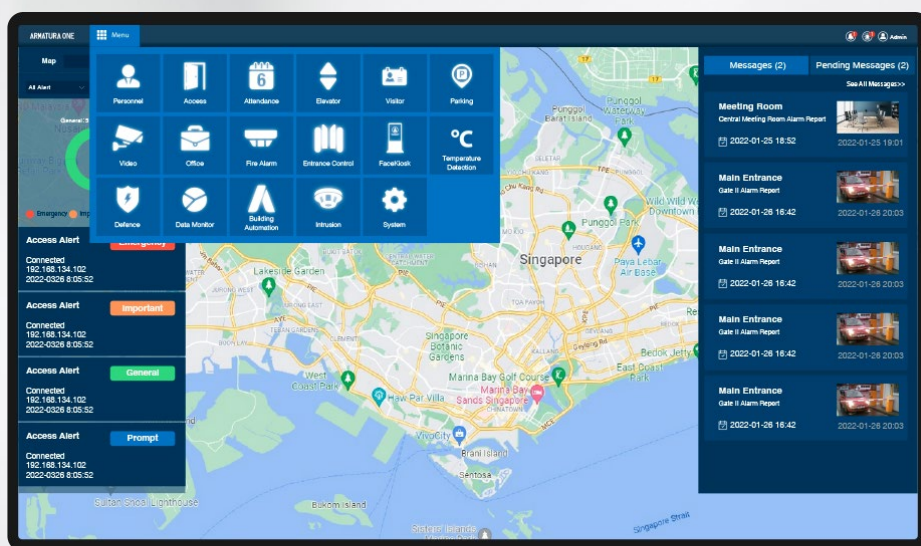






## ARMATURA CONNECT

Armatura connect App supports all Armatura products





Address: 190 Bluegrass Valley Parkway, Alpharetta, GA 30005

Phone: + 1 (470) 816-1970

Email: [sales@armatura.us](mailto:sales@armatura.us)

Website: [www.armatura.us](http://www.armatura.us)

Copyright © 2023 Armatura LLC @ ARMATURA, the ARMATURA logo, are trademarks of Armatura